



Revision Highlights

Revision 6 to D631W001-777CDL dated 06/07/2024

The purpose of this revision is to update the export control marking on each page of this Airplane Flight Manual for Export Classification.

The following changes comprise this revision:

Chapter - Front Matter

Title (Revised)

Revised Title page to update the export control marking for Export Classification.

Revision Approval (Revised)

This section uniquely identifies the approval authority and the reference number for this revision.

Log of Sections (Revised)

Revised to reflect sections changed in this revision.



Page Intentionally Left Blank

Title**A242708****Appendix CDL****Model 777 Series
Configuration Deviation List**

This document has Export Administration Regulations (EAR) data with Export Control Classification Numbers (ECCN) of 9E991.

EXPORT CONTROLLED - This technology or software is subject to the U.S. Export Administration Regulations (EAR), (15 C.F.R. Parts 730-774). No authorization from the U.S. Department of Commerce is required for export, re-export, in-country transfer, or access EXCEPT to country group E:1 or E:2 countries/ persons per Supp. 1 to Part 740 of the EAR. ECCN: 9E991

BOEING PROPRIETARY
Copyright © 2023 The Boeing Company
All Rights Reserved.

Boeing claims copyright in each page of this document only to the extent that the page contains copyrightable subject matter. Boeing also claims copyright in the document as a compilation and/or collective work.

This document includes proprietary information owned by The Boeing Company and/or one or more third parties. Treatment of the document and the information it contains is governed by contract with Boeing. For more information contact The Boeing Company, P.O. Box 3707, Seattle, Washington 98124.

D631W001

BOEING COMMERCIAL AIRPLANE GROUP, SEATTLE, WASHINGTON, U.S.A.

Revision Approval

A242708

This Revision Approval may only be used in conjunction with a Log of Sections that refers to Revision Approval Number A242708 in the revision approval number column for the Revision Approval section.

Approved by:



Flight Analyst E-UM, ODA-300064-NM, for

06/07/2024

Manager, Flight Test & Human Factors Branch, AIR-710
Federal Aviation Administration

Approved Date

Log of Sections

A242708

D631W001-777CDL Revision 6

Date:

06/07/2024

Chapter/Section	Revision Approval Number	Approval Date
Front Matter		
* Title	A242708	06/07/2024
* Revision Approval	A242708	06/07/2024
* Log of Sections	A242708	06/07/2024
Preface	A121244	10/16/2013
Introduction	A121244	10/16/2013
Configuration Deviation List		
General Limitations	A121244	10/16/2013
21-32-01 Negative Pressure Relief Vent	A121244	10/16/2013
21-52-01 ECS Ram Air Exhaust Louver	A180399	09/18/2018
23-61-01 Static Discharger	A121244	10/16/2013
32-12-01 Main Landing Gear Drag Strut Door	A162928	10/11/2016
32-12-02 Main Landing Gear Trunnion Door	A162928	10/11/2016
32-45-01 Wheel Hubcaps	A162928	10/11/2016
33-31-01 External Cargo Loading Light Lens	A121244	10/16/2013
33-41-01 Wing Illumination Light Lens	A121244	10/16/2013
33-42-01 Nose Gear Landing and Taxi Light	A121244	10/16/2013
33-43-01 Wing Tip Rear Position Light Lens	A121244	10/16/2013
33-43-02 Tail Cone Position Light Lens	A152168	03/30/2016
33-44-01 Upper Or Lower Fuselage Anti-Collision Light Lens	A152168	03/30/2016
33-44-02 Tail Cone Anti-Collision Light Lens	A152168	03/30/2016
33-45-01 Logo Light Lens	A121244	10/16/2013
33-51-01 External Emergency Light Lens	A121244	10/16/2013
52-11-01 Passenger Door Handle Covers	A121244	10/16/2013
52-35-01 Aft Small Cargo Door Control Door	A121244	10/16/2013
52-35-02 Aft Cargo Handling Control Door	A121244	10/16/2013
52-37-01 Aft Large Cargo Door Control Door	A121244	10/16/2013
52-37-02 Main Cargo Handling Control Door	A121244	10/16/2013
52-81-01 Main Landing Gear Door Heat Shield	A121244	10/16/2013
52-81-02 Main Landing Gear Door Bolt Head Cover Plugs	A121244	10/16/2013
54-52-01 Forward Fairing Pressure Relief Door	A121244	10/16/2013
54-53-01 Strut Aft Mount Access Panel	A162928	10/11/2016
54-53-02 Strut Pressure Relief Door	A121244	10/16/2013
55-20-01 Elevator Access Cover	A121244	10/16/2013
55-20-02 Elevator Inboard End Seals	A180391	08/31/2018
55-20-03 Horizontal Stabilizer-to-Elevator Blade Seals	A180399	09/18/2018

* = Revised Sections

Log of Sections (Continued)

A242708

Chapter/Section	Revision Approval Number	Approval Date
55-40-01 Vertical Stabilizer Tip Fairing Rudder Seal	A180399	09/18/2018
55-40-02 Rudder-to-Fuselage Seal	A121244	10/16/2013
55-40-03 Rudder-to-Tab Streamwise Seal	A121244	10/16/2013
55-40-04 Rudder Tab-to-Fuselage Seal	A121244	10/16/2013
55-40-05 Rudder Access Cover	A121244	10/16/2013
55-40-06 Rudder Tab Access Cover	A121244	10/16/2013
55-40-07 Rudder Tab Control Rod Fairing	A162928	10/11/2016
55-40-08 Vertical Stabilizer-To-Fuselage Seal	A162928	10/11/2016
55-40-09 Vertical Stabilizer-to-Rudder Blade Seals	A180391	08/31/2018
55-40-10 Rudder-to-Tab Blade Seals	A180399	09/18/2018
56-11-01 Number 1 Windshield Aerodynamic Sealant	A121244	10/16/2013
56-11-02 Number 3 Windshield Aerodynamic Sealant	A121244	10/16/2013
57-00-01 Wing Vortex Generator	A121244	10/16/2013
57-00-02 Outboard Flap Vortex Generator	A162928	10/11/2016
57-26-01 Inboard Flap Center Track Fairing	A162928	10/11/2016
57-26-02 Inboard Flap Center Track Fairing Seal	A162928	10/11/2016
57-26-03 Inboard Flap Inboard Support Fairing Seal	A162928	10/11/2016
57-26-04 Outboard Flap Track Fairing Access Panel	A162928	10/11/2016
57-26-05 Outboard Flap Track Fairing	A121244	10/16/2013
57-26-06 Outboard Flap Track Fairing Seal	A162928	10/11/2016
57-26-07 Outboard Flap Auxiliary Track Fairing	A121244	10/16/2013
57-26-08 Outboard Flap Auxiliary Track Fairing Seal	A162928	10/11/2016
57-26-09 Inboard Flap Track Flaperon Fairing Seals	A162928	10/11/2016
57-26-10 Inboard Flap Inboard Fairing - Aft Segment	A121244	10/16/2013
57-31-01 Wing Tip Access Panel	A121244	10/16/2013
57-31-02 Wing Tip Fairing	A121244	10/16/2013
57-31-03 Raked Tip	A162928	10/11/2016
57-41-01 Outboard Leading Edge Slat Restoration Seal Assembly	A162928	10/11/2016
57-41-02 Wing Fixed Leading Edge Lower Panel	A162928	10/11/2016
57-41-03 Slat Linkage Fairing Panel	A162928	10/11/2016
57-41-04 Slat Spanwise Flow Seal	A162928	10/11/2016
57-41-05 Outboard Slat Spanwise Bulb Seal	A162928	10/11/2016
57-41-06 Slat Spanwise Lower Flexible Seal	A162928	10/11/2016
57-41-08 Inboard Slat Inboard End Bulb Seal	A121244	10/16/2013
57-41-09 Krueger End Seal	A162928	10/11/2016
57-41-23 Inboard Slat Inboard End Blade Seal	A211964	11/05/2021
57-51-01 Wing Fixed Trailing Edge Lower Panel	A164397	01/10/2017
57-51-02 Inboard Flap Inboard Seal	A180399	09/18/2018

* = Revised Sections

Log of Sections (Continued)

A242708

Chapter/Section	Revision Approval Number	Approval Date
57-51-03 Overwing Fairing Torque Tube Door	A121244	10/16/2013
57-51-04 Number 3 and 6 Flap Fairings Seals	A121244	10/16/2013
57-53-01 Flaperon Inboard Seal	A121244	10/16/2013
57-53-02 Inboard Flap Leading Edge Seal	A121244	10/16/2013
57-53-03 Outboard Flap Leading Edge Seal	A121244	10/16/2013
57-63-02 Flaperon Cove Lip Door Streamwise Seal	A121244	10/16/2013
57-63-03 Flaperon Cove Lip Door Hingewise Seal	A162928	10/11/2016
57-63-04 Flaperon Outboard Seal	A121244	10/16/2013
57-63-05 Aileron Streamwise Seal	A121244	10/16/2013
57-63-06 Aileron Power Control Unit Fairing	A121244	10/16/2013
57-63-07 Aileron Mass Balance Seal	A162928	10/11/2016
57-63-08 Aileron Hinge Blade Seal	A180391	08/31/2018
57-63-09 Aileron Hinge Blade Seal and Seal Retainer	A180391	08/31/2018
57-71-01 Spoiler Streamwise Seal	A121244	10/16/2013
57-71-02 Spoiler Leading Edge Seal	A121244	10/16/2013
71-11-01 Oil Tank Sight Glass Door and Pressure Relief Door	A121244	10/16/2013
71-11-02 Engine Cowl Inlet Streamwise Aerofiller	A121244	10/16/2013
71-11-03 Fan Cowl Pressure Relief Door	A121244	10/16/2013
71-11-04 Oil Tank Access Door	A121244	10/16/2013
71-11-05 Fan Cowl Hoist Point Plugs	A121244	10/16/2013
72-00-01 Debris Shield	A121244	10/16/2013
78-31-01 Thrust Reverser Sleeve Actuator Access Panel	A121244	10/16/2013
78-31-02 Thrust Reverser Blocker Door	A162928	10/11/2016
78-31-03 Thrust Reverser Cascade Segment	A121244	10/16/2013
78-31-04 Thrust Reverser Wedge Fairing	A162928	10/11/2016
78-31-05 Thrust Reverser Blocker Door Seals	A121244	10/16/2013
78-31-06 Thrust Reverser Hinge Beam Forward Fairing Access Door	A180399	09/18/2018

* = Revised Sections



Preface

A121244

This Airplane Flight Manual (AFM) appendix complies with the U.S. Federal Aviation Administration (FAA) Title 14 of the Code of Federal Regulations (CFR). This AFM appendix adds, amends, replaces, and/or supersedes information found in the FAA approved AFM.

This AFM appendix is approved by the FAA.

Each revision to this AFM appendix includes a new Log of Sections listing the effective sections comprising the AFM appendix. Revisions to text material are indicated by vertical bars in the margins.

Introduction**A121244**

This Configuration Deviation List (CDL) provides additional certificate limitations for operation of the Boeing Model 777 series airplane without certain secondary airframe and engine parts as listed herein. The Certificate Limitations in the Airplane Flight Manual are applicable except as amended in this appendix.



Page Intentionally Left Blank

General Limitations

A121244

This Configuration Deviation List contains additional certificate limitations for operation of the Boeing Model 777 series airplane without certain secondary airframe and engine parts as listed herein. The Certificate Limitations in the Airplane Flight Manual are applicable except as amended in this appendix.

The associated limitations must be listed on a placard affixed in the cockpit in clear view of the pilot-in-command and other appropriate crew member(s).

Operation with those missing parts requiring a reduction of V_{MO}/M_{MO} is permitted only when the airplane has the appropriate alternate V_{MO} set prior to flight.

The pilot-in-command will be notified of each operation with a missing part(s) by listing the missing part(s) on the flight or dispatch release.

The operator will list on the aircraft logbook an appropriate notation covering the missing part(s) on each flight.

If an additional part is lost in flight, the airplane may not depart the airport at which it landed following this event until it again complies with the limitations of this appendix. This, of course, does not preclude the issuance of a ferry permit to allow the airplane to be flown to a point where the necessary repairs or replacements can be made.

Unless otherwise specified herein, parts from different sub-systems may be missing. In addition, any combination of the authorized number of parts from a single sub-system may be missing unless otherwise specified. The performance decrements are cumulative. Where performance decrements are listed as negligible, no more than three negligible items may be missing without taking further decrement. For each missing item more than three, reduce the takeoff, landing and enroute climb limits by 100 pounds, unless otherwise indicated.

The takeoff performance decrements in this appendix are to be applied to the performance limited takeoff weights determined from:

Field length, first segment climb, second segment climb, final segment climb, or obstacles in the takeoff flight path.

The enroute performance decrements in this appendix are to be applied to the weight limit determined from enroute, one-engine-inoperative climb performance.

The landing performance decrements in this appendix are to be applied to the performance limited landing weights determined from:

Landing field length, landing climb, or approach climb.

The numbering and designation of sub-systems in this appendix is based on ATA Specification 100. The parts within each sub-system are identified by functional description and, when necessary, by part numbers.

Continued on next page

Section General Limitations, continued from previous page

Items are applicable to all 777 engine/airframe combinations unless otherwise designated.

21-32-01 Negative Pressure Relief Vent

A121244

Any number may be missing. With one or more negative pressure relief vents missing, the flight must be conducted unpressurized, cargo compartments must remain empty or carry only non-combustible materials, and extended over water flight is prohibited.

Reduce performance limited weights by:

Applicable Models	Number Installed	Takeoff	Enroute Climb	Approach and Landing
777	4	Negligible	Negligible	Negligible

21-52-01 ECS Ram Air Exhaust Louver

A180399

Any number may be missing. Note: The production design of the 777-300 does not include ECS Ram Air Exhaust Louvers. Some 777-300 have louvers installed via Service Bulletin.

For 777-200: Not applicable to Line Number 1, 10, 18, 41 and after Line Number 42 or after incorporation of Boeing Service Bulletin 777-21-0011.

For 777-300ER: Applicable to Line Number 530, 538 and on.

For 777-200LR/F: Applicable to Line Number 504, 519 and on.

Reduce performance limited weights by:

Applicable Models	Number Installed	Takeoff	Enroute Climb	Approach and Landing
777-200 Applicable upon incorporation of Boeing Service Bulletin installing Ram Air Exhaust Louvers	6	Negligible	Negligible	Negligible
777-200LR/F	6	200 lb / 91 kg	450 lb / 205 kg	150 lb / 69 kg
777-300/-300ER	6	No Decrement	No Decrement	No Decrement

23-61-01 Static Discharger**A121244**

For all airplane operations, a maximum of 5 dischargers may be missing. The following quantity of dischargers must be installed at the indicated locations: two of the five most outboard dischargers on each wing, two of the four most outboard dischargers on each horizontal stabilizer, and two of the four most top dischargers on the vertical stabilizer.

Reduce performance limited weights by:

Applicable Models	Number Installed	Takeoff	Enroute Climb	Approach and Landing
777-200/300	50	No decrement	No decrement	No decrement
777-200LR/F/300ER	54	No decrement	No decrement	No decrement

32-12-01 Main Landing Gear Drag Strut Door

A162928

One may be missing.

Note: This item may not be missing in combination with items 32-12-02 or 57-51-01.

Limit speed to 270 KIAS/0.73 Mach.

If "ALTERNATE GEAR DOWN DISPATCH" switch is installed, then the switch must be placed in the "VMO" position.

Reduce performance limited weights by:

Applicable Models	Number Installed	Takeoff	Enroute Climb	Approach and Landing
777-200				
PW4084	2	2400 lb / 1089 kg	6000 lb / 2722 kg	150 lb / 69 kg
PW4090	2	2700 lb / 1225 kg	5400 lb / 2450 kg	150 lb / 69 kg
GE90-85B	2	2700 lb / 1225 kg	4500 lb / 2042 kg	150 lb / 69 kg
GE90-90B	2	3000 lb / 1361 kg	5100 lb / 2314 kg	200 lb / 91 kg
GE90-94B	2	3000 lb / 1361 kg	6000 lb / 2722 kg	150 lb / 69 kg
RR884	2	2100 lb / 953 kg	4500 lb / 2042 kg	150 lb / 69 kg
RR892	2	3300 lb / 1497 kg	5100 lb / 2314 kg	150 lb / 69 kg
RR895	2	2400 lb / 1089 kg	5100 lb / 2314 kg	250 lb / 114 kg
777-300				
PW4090	2	2400 lb / 1089 kg	5400 lb / 2450 kg	150 lb / 69 kg
PW4098	2	3600 lb / 1633 kg	5400 lb / 2450 kg	150 lb / 69 kg
RR892	2	2400 lb / 1089 kg	4800 lb / 2178 kg	150 lb / 69 kg
777-300ER	2	2600 lb / 1180 kg	5400 lb / 2450 kg	150 lb / 69 kg
777-200LR/F	2	2700 lb / 1225 kg	5100 lb / 2314 kg	200 lb / 91 kg

32-12-02 Main Landing Gear Trunnion Door

A162928

One may be missing.

Note: This item may not be missing in combination with items 32-12-01 or 57-51-01.

Limit speed to 270 KIAS/0.73 Mach.

If "ALTERNATE GEAR DOWN DISPATCH" switch is installed, then the switch must be placed in the "VMO" position.

Reduce performance limited weights by:

Applicable Models	Number Installed	Takeoff	Enroute Climb	Approach and Landing
777-200				
PW4084	2	2450 lb / 1112 kg	6050 lb / 2745 kg	150 lb / 69 kg
PW4090	2	2750 lb / 1248 kg	5450 lb / 2473 kg	150 lb / 69 kg
GE90-85B	2	2750 lb / 1248 kg	4550 lb / 2064 kg	150 lb / 69kg
GE90-90B	2	3050 lb / 1384 kg	5150 lb / 2337 kg	250 lb / 114 kg
GE90-94B	2	3050 lb / 1384 kg	6050 lb / 2745 kg	150 lb / 69 kg
RR884	2	2150 lb / 976 kg	4550 lb / 2064 kg	150 lb / 69 kg
RR892	2	3350 lb / 1520 kg	5150 lb / 2337 kg	200 lb / 91 kg
RR895	2	2450 lb / 1112 kg	5150 lb / 2337 kg	250 lb / 114 kg
777-300				
PW4090	2	2450 lb / 1112 kg	5450 lb / 2473 kg	150 lb / 69 kg
PW4098	2	3650 lb / 1656 kg	5450 lb / 2473 kg	150 lb / 69 kg
RR892	2	2450 lb / 1112 kg	4850 lb / 2200 kg	150 lb / 69 kg
777-300ER	2	2600 lb / 1180 kg	5450 lb / 2473 kg	150 lb / 69 kg
777-200LR/F	2	2750 lb / 1248 kg	5150 lb / 2337 kg	200 lb / 91 kg

32-45-01 Wheel Hubcaps

A162928

One main wheel hubcap per each six wheel main gear truck may be missing.

One or both nose wheel hubcaps may be missing.

Reduce performance limited weights by:

Applicable Models	Number Installed	Takeoff	Enroute Climb	Approach and Landing
777	14	150 lb / 69 kg	200 lb / 91 kg	150 lb / 69 kg

33-31-01 External Cargo Loading Light Lens

A121244

Any number may be missing.

Reduce performance limited weights by:

Applicable Models	Number Installed	Takeoff	Enroute Climb	Approach and Landing
777-200/200LR/ 300/300ER	4	Negligible	Negligible	Negligible
777F	5	Negligible	Negligible	Negligible

33-41-01 Wing Illumination Light Lens

A121244

Both may be missing.

Reduce performance limited weights by:

Applicable Models	Number Installed	Takeoff	Enroute Climb	Approach and Landing
777	2	Negligible	Negligible	Negligible

33-42-01 Nose Gear Landing and Taxi Light

A121244

Any number may be missing.

Reduce performance limited weights by:

Applicable Models	Number Installed	Takeoff	Enroute Climb	Approach and Landing
777	4	No decrement	No decrement	No decrement

33-43-01 Wing Tip Rear Position Light Lens

A121244

Both may be missing.

Note: When the lens is missing, disconnect electrical power and remove light bulb, reflector, lens cover and lens cover support. With the rest of the light assembly intact, cover the opening with speed tape.

Reduce performance limited weights by:

Applicable Models	Number Installed	Takeoff	Enroute Climb	Approach and Landing
777	2	No decrement	No decrement	No decrement

33-43-02 Tail Cone Position Light Lens

A152168

One may be missing.

Note:

1. With the rest of the light assembly intact, cover the opening with speed tape. Pull and collar the Tail Cone Position Light circuit breaker, C33020.
2. Dispatch using MMEL item 33-43-02.

Reduce performance limited weights by:

Applicable Models	Number Installed	Takeoff	Enroute Climb	Approach and Landing
777	1	Negligible	Negligible	Negligible

33-44-01 Upper Or Lower Fuselage Anti-Collision Light Lens

A152168

Both may be missing.

Note:

1. When the lens is missing, disconnect electrical power and remove light bulb, reflector, lens cover and lens cover support. With the rest of the light assembly intact, cover the opening with speed tape.
2. CDL item 33-44-02 may not be missing.
3. Dispatch using MMEL item 33-44-01.

Reduce performance limited weights by:

Applicable Models	Number Installed	Takeoff	Enroute Climb	Approach and Landing
777	2	No decrement	No decrement	No decrement

33-44-02 Tail Cone Anti-Collision Light Lens

A152168

One may be missing.

Note:

1. When the lens is missing, unplug (cap and stow) the connector to the Tail Cone Anti-Collision Light. With the rest of the light assembly intact, cover the opening with speed tape.
2. CDL item 33-44-01 may not be missing.
3. Dispatch using MMEL item 33-44-01.

Reduce performance limited weights by:

Applicable Models	Number Installed	Takeoff	Enroute Climb	Approach and Landing
777	1	Negligible	Negligible	Negligible

33-45-01 Logo Light Lens

A121244

Any number may be missing.

Note: Openings created by the missing lenses must be covered with "speed tape" (Permacel II or 3M 425). Pull and collar light circuit breaker. Inspect condition of "speed tape" every other flight.

Reduce performance limited weights by:

Applicable Models	Number Installed	Takeoff	Enroute Climb	Approach and Landing
777	4	Negligible	Negligible	Negligible

33-51-01 External Emergency Light Lens

A121244

One may be missing.

Reduce performance limited weights by:

Applicable Models	Number Installed	Takeoff	Enroute Climb	Approach and Landing
777-200/200LR	8	Negligible	Negligible	Negligible
777-300/300ER	14	Negligible	Negligible	Negligible
777F	2	Negligible	Negligible	Negligible

52-11-01 Passenger Door Handle Covers

A121244

Any number may be missing.

Reduce performance limited weights by:

Applicable Models	Number Installed	Takeoff	Enroute Climb	Approach and Landing
777-200/200LR	16	Negligible	Negligible	Negligible
777-300/300ER	20	Negligible	Negligible	Negligible
777F	4	Negligible	Negligible	Negligible

52-35-01 Aft Small Cargo Door Control Door

A121244

May be missing.

Reduce performance limited weights by:

Applicable Models	Number Installed	Takeoff	Enroute Climb	Approach and Landing
777	1	Negligible	Negligible	Negligible

52-35-02 Aft Cargo Handling Control Door

A121244

May be missing.

Reduce performance limited weights by:

Applicable Models	Number Installed	Takeoff	Enroute Climb	Approach and Landing
777	1	Negligible	Negligible	Negligible

52-37-01 Aft Large Cargo Door Control Door

A121244

May be missing.

Reduce performance limited weights by:

Applicable Models	Number Installed	Takeoff	Enroute Climb	Approach and Landing
777	1	Negligible	Negligible	Negligible

52-37-02 Main Cargo Handling Control Door

A121244

May be missing.

Reduce performance limited weights by:

Applicable Models	Number Installed	Takeoff	Enroute Climb	Approach and Landing
777F	1	Negligible	Negligible	Negligible

52-81-01 Main Landing Gear Door Heat Shield

A121244

One may be missing provided the associated air conditioning pack is placarded DO NOT OPERATE and is considered to be inoperative, the remaining pack operates normally, and flight remains within 60 minutes of a suitable airport. Appropriate performance adjustments must be applied according to operation with an inoperative air conditioning pack.

Reduce performance limited weights by:

Applicable Models	Number Installed	Takeoff	Enroute Climb	Approach and Landing
777	2	Negligible	Negligible	Negligible

52-81-02 Main Landing Gear Door Bolt Head Cover Plugs

A121244

Any number may be missing.

Reduce performance limited weights by:

Applicable Models	Number Installed	Takeoff	Enroute Climb	Approach and Landing
777	12	Negligible	Negligible	Negligible

54-52-01 Forward Fairing Pressure Relief Door

A121244

Both may be missing.

Reduce performance limited weights for each missing door by:

Applicable Models	Number Installed	Takeoff	Enroute Climb	Approach and Landing
777 RR	2	150 lb / 69 kg	200 lb / 91 kg	150 lb / 69 kg

54-53-01 Strut Aft Mount Access Panel

A162928

Any number may be missing.

Reduce performance limited weights for each missing panel by:

Applicable Models	Number Installed	Takeoff	Enroute Climb	Approach and Landing
777				
PW	4	Negligible	Negligible	Negligible
GE	6	Negligible	Negligible	Negligible
RR	2	Negligible	Negligible	Negligible

54-53-02 Strut Pressure Relief Door

A121244

All may be missing.

Reduce performance limited weights for each missing door by:

Applicable Models	Number Installed	Takeoff	Enroute Climb	Approach and Landing
777 PW	8	Negligible	Negligible	Negligible
777 GE	4	Negligible	Negligible	Negligible
777 RR	2	Negligible	Negligible	Negligible

55-20-01 Elevator Access Cover

A121244

Any number may be missing.

Reduce performance limited weights by:

Applicable Models	Number Installed	Takeoff	Enroute Climb	Approach and Landing
777	8	Negligible	Negligible	Negligible

55-20-02 Elevator Inboard End Seals

A180391

Both may be missing. Note: some line numbers do not have these seals.

Applicable Models	Number Installed	Takeoff	Enroute Climb	Approach and Landing
777	2	No Decrement	No Decrement	No Decrement

55-20-03 Horizontal Stabilizer-to-Elevator Blade Seals

A180399

Up to 10 ft (120 inches) may be missing from the airplane. No more than 5 ft (60 inches) per horizontal stabilizer semi-span may be missing. Seals may not be missing on both upper and lower surfaces of the same horizontal stabilizer semi-span.

Reduce performance for each foot of missing seal by:

Applicable Models	Number Installed	Takeoff	Enroute Climb	Approach and Landing
777	24 (Note 1)	50 lb / 23 kg	100 lb / 46 kg	50 lb / 23 kg
777-200, 777-300	52 (Note 2)	50 lb / 23 kg	100 lb / 46 kg	50 lb / 23 kg

Note 1: Current production 24 seal configuration (all 777 models)

Note 2: Early production 52 seal configuration (777-200, 777-300 only)

55-40-01 Vertical Stabilizer Tip Fairing Rudder Seal

A180399

Any number and length of seals may be missing.

Reduce performance limited weights by:

Applicable Models	Number Installed	Takeoff	Enroute Climb	Approach and Landing
777	3	Negligible	Negligible	Negligible

55-40-02 Rudder-to-Fuselage Seal

A121244

Any number may be missing.

Reduce performance limited weights for each missing seal by:

Applicable Models	Number Installed	Takeoff	Enroute Climb	Approach and Landing
777	4	350 lb / 159 kg	550 lb / 249 kg	300 lb / 136 kg

55-40-03 Rudder-to-Tab Streamwise Seal

A121244

Both may be missing.

Reduce performance limited weights for each missing seal by:

Applicable Models	Number Installed	Takeoff	Enroute Climb	Approach and Landing
777	2	150 lb / 68 kg	200 lb / 91 kg	Negligible

55-40-04 Rudder Tab-to-Fuselage Seal

A121244

Both may be missing.

Reduce performance limited weights for each missing seal by:

Applicable Models	Number Installed	Takeoff	Enroute Climb	Approach and Landing
777	2	150 lb / 68 kg	250 lb / 113 kg	Negligible

55-40-05 Rudder Access Cover

A121244

Any number may be missing.

Reduce performance limited weights by:

Applicable Models	Number Installed	Takeoff	Enroute Climb	Approach and Landing
777	4	Negligible	Negligible	Negligible

55-40-06 Rudder Tab Access Cover

A121244

Both may be missing.

Reduce performance limited weights by:

Applicable Models	Number Installed	Takeoff	Enroute Climb	Approach and Landing
777	2	Negligible	Negligible	Negligible

55-40-07 Rudder Tab Control Rod Fairing

A162928

One may be missing.

Reduce performance limited weights by:

Applicable Models	Number Installed	Takeoff	Enroute Climb	Approach and Landing
777-200/300/300ER	3	400 lb / 182 kg	650 lb / 295 kg	350 lb / 159 kg
777-200LR/F	3	300 lb / 137 kg	550 lb / 250 kg	250 lb / 114 kg

55-40-08 Vertical Stabilizer-To-Fuselage Seal

A162928

Two may be missing. Any length of those two seals may be missing.

Reduce performance limited weights by:

Applicable Models	Number Installed	Takeoff	Enroute Climb	Approach and Landing
777	9	Negligible	Negligible	Negligible

55-40-09 Vertical Stabilizer-to-Rudder Blade Seals

A180391

Up to 7.5 ft (90 inches) may be missing from one side of the stabilizer only. The seal on the opposite side must be intact.

Reduce performance for each foot of missing seal by:

Applicable Models	Number Installed	Takeoff	Enroute Climb	Approach and Landing
777-200/-300	13 (Note 1)	250 lb / 114 kg	400 lb / 182 kg	250 lb / 114 kg
777-200/-300	20 (Note 2)	250 lb / 114 kg	400 lb / 182 kg	250 lb / 114 kg
777-200LR/-300ER/F	13	200 lb / 91 kg	350 lb / 159 kg	200 lb / 91 kg

Note 1: Current production 13 seal configuration

Note 2: Early production 20 seal configuration

55-40-10 Rudder-to-Tab Blade Seals

A180399

All of the seal may be missing from one side of the rudder only. The seal on the opposite side must be intact.

Reduce performance for each foot of missing seal by:

Applicable Models	Number Installed	Takeoff	Enroute Climb	Approach and Landing
777-200/-300	15 (Note 1)	150 lb / 69 kg	250 lb / 114 kg	150 lb / 69 kg
777-200	16 (Note 2)	150 lb / 69 kg	250 lb / 114 kg	150 lb / 69 kg
777-200LR/-300ER/F	15 (Note 1)	100 lb / 46 kg	200 lb / 91 kg	100 lb / 46 kg

Note 1: Current production 15 seal configuration

Note 2: Early production 16 seal configuration (777-200 only)

56-11-01 Number 1 Windshield Aerodynamic Sealant

A121244

Both may be missing.

Reduce performance limited weights by:

Applicable Models	Number Installed	Takeoff	Enroute Climb	Approach and Landing
777	2	Negligible	Negligible	Negligible

56-11-02 Number 3 Windshield Aerodynamic Sealant

A121244

Both may be missing.

Reduce performance limited weights by:

Applicable Models	Number Installed	Takeoff	Enroute Climb	Approach and Landing
777	2	Negligible	Negligible	Negligible

57-00-01 Wing Vortex Generator

A121244

Two per wing may be missing. Missing vortex generators must not be adjacent.

Reduce performance limited weights by:

Applicable Models	Number Installed	Takeoff	Enroute Climb	Approach and Landing
777-200/300	32	No decrement	No decrement	No decrement
777-200LR/F	46	No decrement	No decrement	No decrement
777-300ER prior to Line Number 530 and 531, 532, 535 and 536	32	No decrement	No decrement	No decrement
777-300ER Line Number 504, 519, 530, 538 and on or after incorporation of Boeing Service Bulletin 777-57-0052	46	No decrement	No decrement	No decrement

57-00-02 Outboard Flap Vortex Generator

A162928

Eight (4 on each wing) may be missing. Increase landing approach speed V_{REF} by 2 knots.

Reduce performance limited weights for any number missing by:

Applicable Models	Number Installed	Takeoff and Enroute	Approach and Landing	Landing Field Length	Max Quick Turnaround
777-300	100	No decrement	6500 lb / 2949 kg	14,100 lb / 6396 kg	6000 lb / 2722 kg
777-300ER	100	No decrement	500 lb / 227 kg	16,400 lb / 7439 kg	13,400 lb / 6079 kg
777-200LR/F	100	No decrement	500 lb / 227 kg	155,000 lb / 70,307 kg or increase landing field length by 230 ft / 71 m	13,400 lb / 6079 kg

57-26-01 Inboard Flap Center Track Fairing

A162928

One may be missing. The aft segment should be removed if the forward segment is missing.

Reduce performance limited weights by:

Applicable Models	Number Installed	Takeoff	Enroute Climb	Approach and Landing
777	2	250 lb / 114 kg	400 lb / 182 kg	250 lb / 114 kg

57-26-02 Inboard Flap Center Track Fairing Seal

A162928

Eight may be missing.

Reduce performance limited weights for each foot of missing seal by:

Applicable Models	Number Installed	Takeoff	Enroute Climb	Approach and Landing
777	16	100 lb / 46 kg	100 lb / 46 kg	100 lb / 46 kg

57-26-03 Inboard Flap Inboard Support Fairing Seal

A162928

Eleven may be missing.

Reduce performance limited weights for each foot of missing seal by:

Applicable Models	Number Installed	Takeoff	Enroute Climb	Approach and Landing
777	22	300 lb / 137 kg	450 lb / 205 kg	No decrement

57-26-04 Outboard Flap Track Fairing Access Panel**A162928**

Any number may be missing.

Reduce performance limited weights for each missing panel by:

Applicable Models	Number Installed	Takeoff	Enroute Climb	Approach and Landing
777	20	300 lb / 137 kg	500 lb / 227 kg	300 lb / 137 kg

57-26-05 Outboard Flap Track Fairing

A121244

One may be missing. The aft segment should be removed if the forward segment is missing.

Reduce performance limited weights for a missing fairing by:

Applicable Models	Number Installed	Takeoff	Enroute Climb	Approach and Landing
777-200 GE90-76B thru 85B	4	2950 lb / 1338 kg	4950 lb / 2245 kg	2000 lb / 907 kg
777-200 GE90-90B	4	3300 lb / 1496 kg	5600 lb / 2540 kg	3300 lb / 1496 kg
777-200 GE90-94B	4	3300 lb / 1496 kg	6550 lb / 2971 kg	2000 lb / 907 kg
777-200 PW4074 thru PW4084	4	2650 lb / 1202 kg	6550 lb / 2971 kg	2000 lb / 907 kg
777-200 PW4090	4	2950 lb / 1338 kg	5900 lb / 2676 kg	2000 lb / 907 kg
777-200 RR875 thru RR884	4	2300 lb / 1043 kg	4950 lb / 2245 kg	2000 lb / 907 kg
777-200 RR892	4	3600 lb / 1632 kg	5600 lb / 2540 kg	2300 lb / 1043 kg
777-200 RR895	4	2650 lb / 1202 kg	5600 lb / 2540 kg	3600 lb / 1632 kg
777-300 PW4090	4	2650 lb / 1202 kg	5900 lb / 2676 kg	2000 lb / 907 kg
777-300 RR892/RR884	4	2650 lb / 1202 kg	5250 lb / 2381 kg	2000 lb / 907 kg
777-300ER	4	2800 lb / 1271 kg	5900 lb / 2676 kg	2000 lb / 907 kg
777-200LR/F	4	2950 lb / 1338 kg	5600 lb / 2540 kg	2650 lb / 1203 kg
777-300 PW4098	4	4000 lb / 1814 kg	5900 lb / 2676 kg	2000 lb / 907 kg

57-26-06 Outboard Flap Track Fairing Seal

A162928

Eight (up to 4 on each side) may be missing.

Reduce performance limited weights for each foot of missing seal by:

Applicable Models	Number Installed	Takeoff	Enroute Climb	Approach and Landing
777	32	100 lb / 46 kg	150 lb / 69 kg	100 lb / 46 kg

57-26-07 Outboard Flap Auxiliary Track Fairing

A121244

One may be missing.

Reduce performance limited weights by:

Applicable Models	Number Installed	Takeoff	Enroute Climb	Approach and Landing
777	2	Negligible	150 lb / 68 kg	Negligible

57-26-08 Outboard Flap Auxiliary Track Fairing Seal

A162928

Two may be missing.

Reduce performance limited weights for each foot of missing seal by:

Applicable Models	Number Installed	Takeoff	Enroute Climb	Approach and Landing
777	4	50 lb / 23 kg	50 lb / 23 kg	50 lb / 23 kg

57-26-09 Inboard Flap Track Flaperon Fairing Seals

A162928

Any number may be missing. There are 6 aft seals, 2 intermediate seals, and 10 forward seals.

Note:

1. For missing seals on both wings, the performance limited weight reductions are doubled.
2. For missing forward seal(s), the associated aft seals must be removed.

Reduce performance limited weights for one or more missing seals per wing by:

Applicable Models	Number Installed	Takeoff	Enroute Climb	Approach and Landing
777	18	400 lb / 182 kg	650 lb / 295 kg	No decrement

57-26-10 Inboard Flap Inboard Fairing - Aft Segment

A121244

Two may be missing.

Reduce performance limited weights for each missing fairing by:

Applicable Models	Number Installed	Takeoff	Enroute Climb	Approach and Landing
777	2	150 lb / 68 kg	250 lb / 113 kg	150 lb / 68 kg

57-31-01 Wing Tip Access Panel

A121244

Any number may be missing.

Not allowed for 777-300ER/200LR/F.

Reduce performance limited weights by:

Applicable Models	Number Installed	Takeoff	Enroute Climb	Approach and Landing
777-200/300	4	Negligible	Negligible	Negligible

57-31-02 Wing Tip Fairing

A121244

One may be missing.

Not allowed for 777-300ER/200LR/F.

Reduce performance limited weight by:

Applicable Models	Number Installed	Takeoff	Enroute Climb	Approach and Landing
777-200 GE90-76B thru 85B	2	17950 lb / 8141 kg	5600 lb / 2540 kg	11950 lb / 5420 kg
777-200 GE90-90B	2	19950 lb / 9049 kg	6300 lb / 2858 kg	19900 lb / 9026 kg
777-200 GE90-94B	2	19950 lb / 9049 kg	7400 lb / 3356 kg	11950 lb / 5420 kg
777-200 PW4074 thru PW4084	2	15950 lb / 7235 kg	7400 lb / 3356 kg	11950 lb / 5420 kg
777-200 PW4090	2	17950 lb / 8141 kg	6700 lb / 3039 kg	11950 lb / 5420 kg
777-200 RR875 thru RR884	2	13950 lb / 6328 kg	5600 lb / 2540 kg	11950 lb / 5420 kg
777-200 RR892	2	21900 lb / 9933 kg	6300 lb / 2858 kg	13950 lb / 6328 kg
777-200 RR895	2	15950 lb / 7235 kg	6300 lb / 2858 kg	21900 lb / 9933 kg
777-300 PW4090	2	15950 lb / 7235 kg	6700 lb / 3039 kg	11950 lb / 5420 kg
777-300 RR892	2	15950 lb / 7235 kg	5950 lb / 2699 kg	11950 lb / 5420 kg
777-300 PW4098	2	24000 lb / 10886 kg	6700 lb / 3039 kg	11950 lb / 5420 kg

57-31-03 Raked Tip

A162928

Both must be removed.

For 777-300ER:

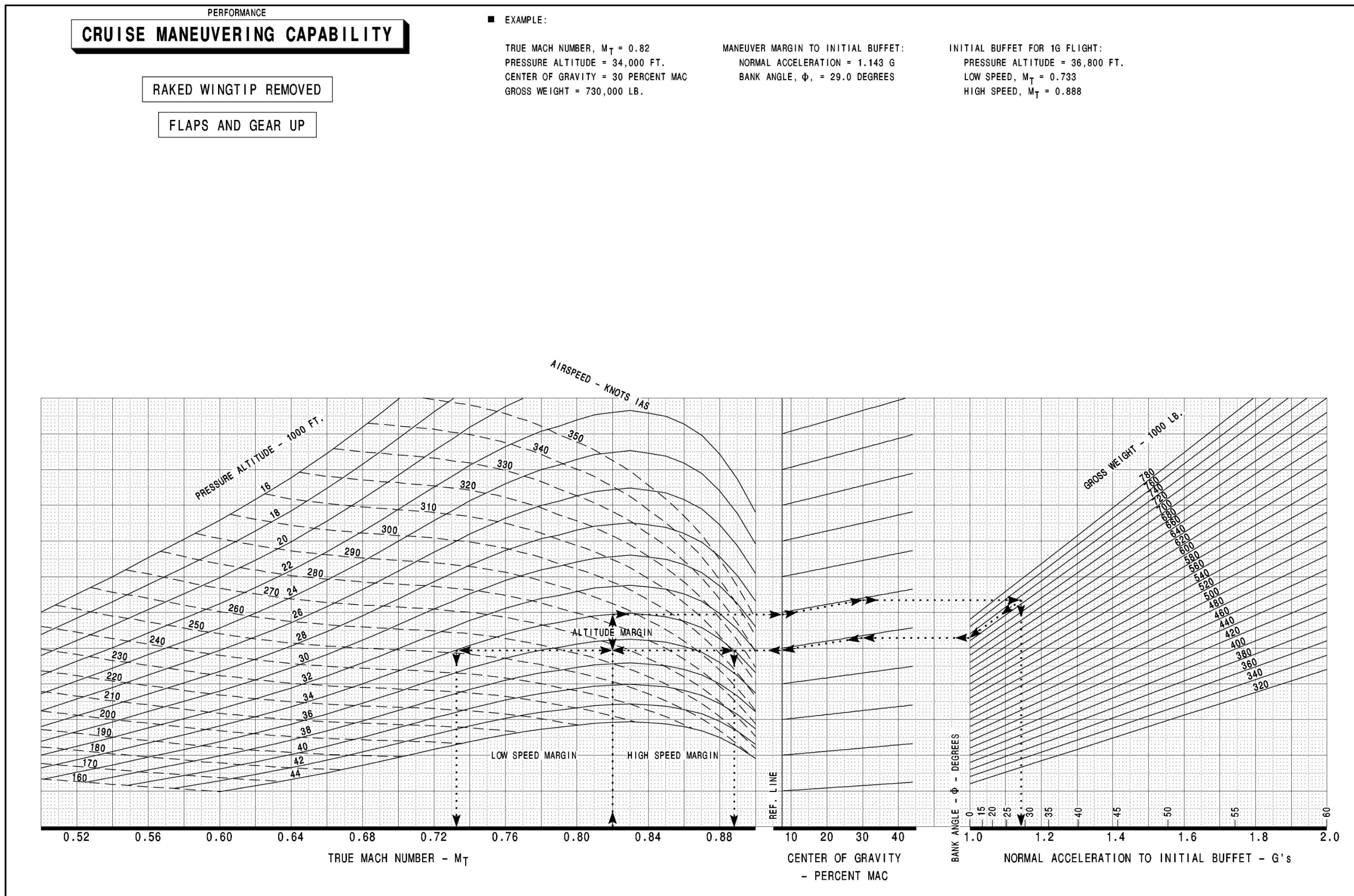
1. For raked wingtips removed, increase the following speeds by 2 knots: V_R , V_2 , V_{REF} .
2. The Cruise Maneuver Capability charts for raked tip removed are provided in this section.
3. Night time operation with the raked wingtips removed is prohibited.
4. Reduce Takeoff performance limited weights by 25,100 lb (11,385 kg).
5. Reduce Landing performance limited weights by 57,500 lb (26,081 kg).
6. Reduce Enroute performance limited weights by 11,700 lb (5,307 kg).
7. Reduce Maximum Quick Turnaround limited weights by 6,900 lb (3,129 kg).
8. Structural Weight are limited to:
 - MTW = 662,000 lb (300,277 kg)
 - MTOW = 660,000 lb (299,370 kg)
 - MLW = 524,000 lb (237,682 kg)
 - MZFW = 495,000 lb (224,528 kg)
8. Aft cg limit for $GW > 633,000$ lb (287,123 kg) = 38.5%

For 777-200LR/F:

1. For raked wingtips removed, increase the following speeds by 2 knots: V_R , V_2 , V_{REF} .
2. Decrease the cruise maneuver capability altitude by 1,000 feet.
3. Night time operation with the raked wingtips removed is prohibited.
4. Reduce Takeoff performance limited weights by 26,300 lb (11,929 kg).
5. Reduce Enroute performance limited weights by 11,800 lb (5,352 kg).
6. Reduce Approach and Landing performance limited weights by 21,300 lb (9,662 kg).
7. Reduce Landing Field Length performance limited weights by 151,000 lb (68,492 kg) or increase landing field length by 230 ft (71 m).
8. Reduce Maximum Quick Turnaround performance limited weights by 7,400 lb (3,357 kg).
9. Structural Weight are limited to:
 - MTW = 658,000 lb (298,463 kg)
 - MTOW = 656,000 lb (297,556 kg)
 - MLW = 470,000 lb (213,188 kg)
 - MZFW = 440,000 lb (199,580 kg)
10. Forward and aft center of gravity restrictions for gross weight with raked tip removed are provided in this section.

Continued on next page

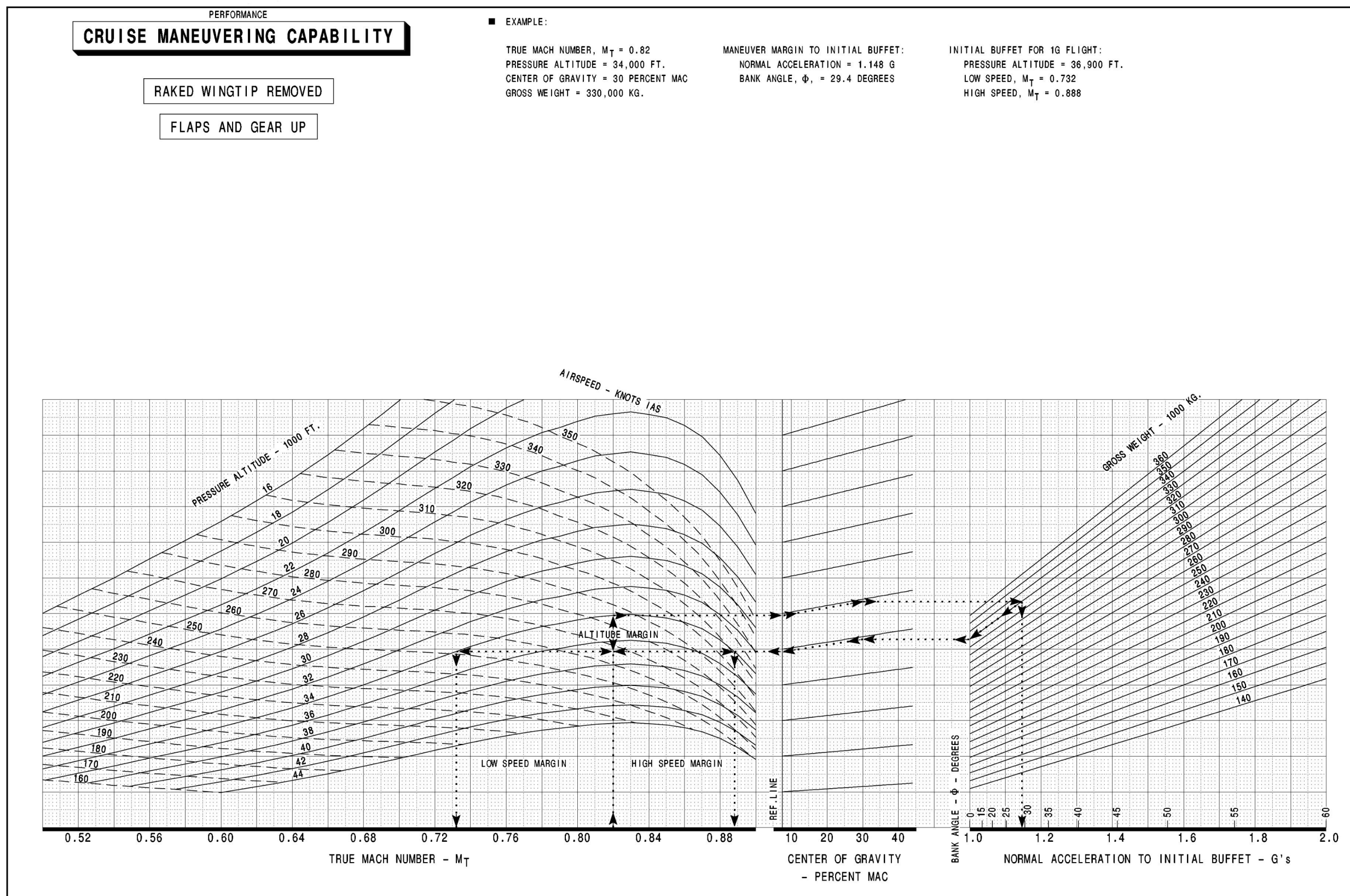
Chart weight in pounds



Continued on next page

Page Intentionally Left Blank

Chart weight in kilograms



Continued on next page

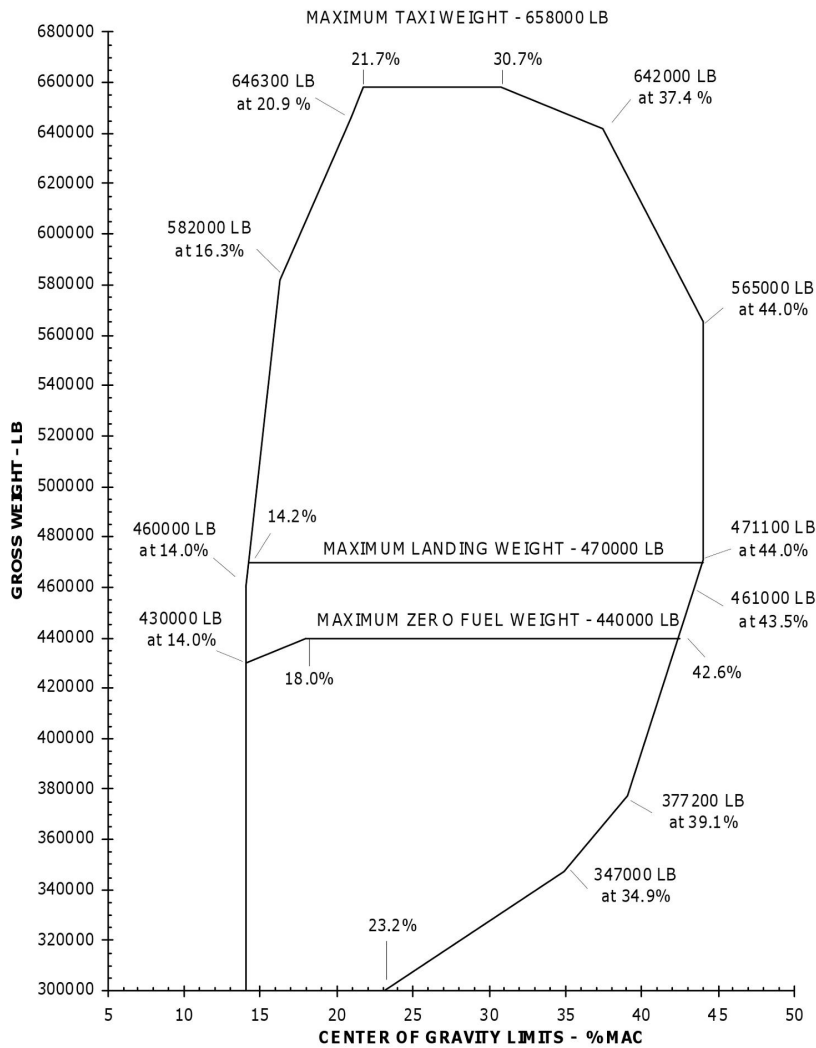
Page Intentionally Left Blank

Chart weight in pounds

CENTER OF GRAVITY LIMITS

RAKED TIP REMOVED

REFER TO THE APPLICABLE WEIGHT AND BALANCE MANUAL FOR IDENTIFICATION OF C.G.
COORDINATES AND SPECIFIC LOADING / OPERATING RESTRICTIONS



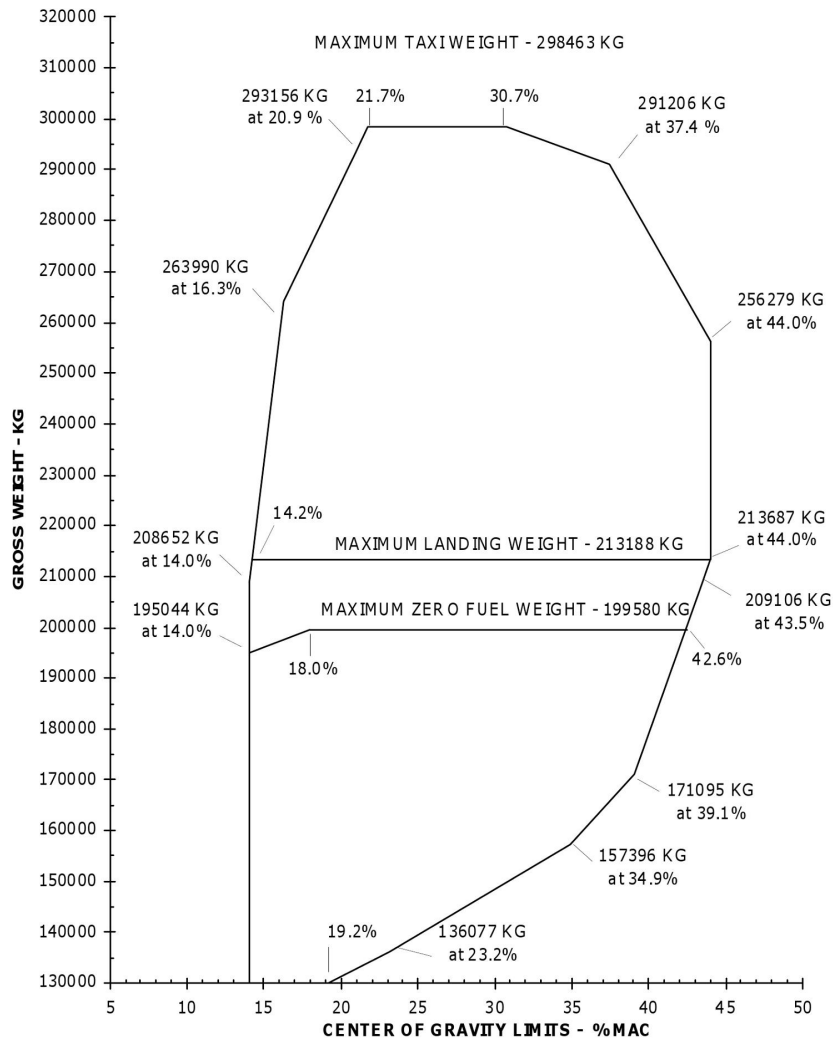
Continued on next page

Chart weight in kilograms

CENTER OF GRAVITY LIMITS

RAKED TIP REMOVED

REFER TO THE APPLICABLE WEIGHT AND BALANCE MANUAL FOR IDENTIFICATION OF C.G. COORDINATES AND SPECIFIC LOADING/OPERATING RESTRICTIONS



Continued on next page

57-41-01 Outboard Leading Edge Slat Restoration Seal Assembly

A162928

Two (one on each side; they must be symmetric) may be missing.

Increase V_{REF} by 2 knots.

Reduce performance limited weight for one symmetrical set missing by:

Applicable Models	Number Installed	Takeoff	Enroute Climb	Approach and Landing	Landing Field Length	Max Quick Turnaround
777-200 GE90-76B thru 85B	24	5400 lb / 2449 kg	No decrement	3600 lb / 1632 kg	14100 lb / 6396 kg or increase landing field length by 150 ft / 46 m	6000 lb / 2722 kg
777-200 GE90-90B	24	6000 lb / 2721 kg	No decrement	6000 lb / 2721 kg	14100 lb / 6396 kg or increase landing field length by 150 ft / 46 m	6000 lb / 2722 kg
777-200 GE90-94B	24	6000 lb / 2721 kg	No decrement	3600 lb / 1632 kg	14100 lb / 6396 kg or increase landing field length by 150 ft / 46 m	6000 lb / 2722 kg
777-200 PW4074 thru PW4084	24	4800 lb / 2177 kg	No decrement	3600 lb / 1632 kg	14100 lb / 6396 kg or increase landing field length by 150 ft / 46 m	6000 lb / 2722 kg
777-200 PW4090	24	5400 lb / 2449 kg	No decrement	3600 lb / 1632 kg	14100 lb / 6396 kg or increase landing field length by 150 ft / 46 m	6000 lb / 2722 kg
777-200 RR875 thru RR884	24	4200 lb / 1905 kg	No decrement	3600 lb / 1632 kg	14100 lb / 6396 kg or increase landing field length by 150 ft / 46 m	6000 lb / 2722 kg
777-200 RR892	24	6600 lb / 2993 kg	No decrement	4200 lb / 1905 kg	14100 lb / 6396 kg or increase landing field length by 150 ft / 46 m	6000 lb / 2722 kg
777-200 RR895	24	4800 lb / 2177 kg	No decrement	6600 lb / 2293 kg	14100 lb / 6396 kg or increase landing field length by 150 ft / 46 m	6000 lb / 2722 kg
777-300 PW4090	24	4800 lb / 2177 kg	No decrement	3600 lb / 1632 kg	14100 lb / 6396 kg or increase landing field length by 150 ft / 46 m	6000 lb / 2722 kg
777-300 PW4098	24	7200 lb / 3,265 kg	No decrement	3600 lb / 1632 kg	14100 lb / 6396 kg or increase landing field length by 150 ft / 46 m	6000 lb / 2722 kg

Continued on next page

Applicable Models	Number Installed	Takeoff	Enroute Climb	Approach and Landing	Landing Field Length	Max Quick Turnaround
777-300 RR892	24	4800 lb / 2177 kg	No decrement	3600 lb / 1632 kg	14100 lb / 6396 kg or increase landing field length by 150 ft / 46 m	6000 lb / 2722 kg
777-300ER	26	5100 lb / 2314 kg	No decrement	3600 lb / 1633 kg	16400 lb / 7438 kg	13400 lb / 6078 kg
777-200LR/F	26	5400 lb / 2450 kg	No decrement	4800 lb / 2178 kg	155000 lb / 70307 kg or increase landing field length by 230 ft / 71 m	13400 lb / 6078 kg

57-41-02 Wing Fixed Leading Edge Lower Panel

A162928

Four (up to two on each side) may be missing.

Reduce performance limited weight for each missing panel by:

Applicable Models	Number Installed	Takeoff	Enroute Climb	Approach and Landing
777-200/-300 Outboard Panels	52	250 lb / 114 kg	350 lb / 159 kg	200 lb / 91 kg
777-200/-300 Inboard Panels	18	850 lb / 386 kg	1350 lb / 613 kg	750 lb / 341 kg
777-300ER Outboard Panels	56	150 lb / 69 kg	350 lb / 159 kg	150 lb / 69 kg
777-300ER Inboard Panels	18	600 lb / 273 kg	1250 lb / 567 kg	450 lb / 205 kg
777-200LR/F Outboard Panels	56	200 lb / 91 kg	300 lb / 137 kg	150 lb / 69 kg
777-200LR/F Inboard Panels	18	650 lb / 295 kg	1150 lb / 522 kg	550 lb / 250 kg

57-41-03 Slat Linkage Fairing Panel

A162928

Twelve (up to six on each side) may be missing.

Reduce performance limited weight for each missing panel by:

Applicable Models	Number Installed	Takeoff	Enroute Climb	Approach and Landing
777-200/300	32	Negligible	Negligible	No decrement
777-300ER/200LR/F	34	Negligible	Negligible	No decrement

57-41-04 Slat Spanwise Flow Seal

A162928

Four (up to two on each side) may be missing.

Reduce performance limited weight for each missing seal by:

Applicable Models	Number Installed	Takeoff	Enroute Climb	Approach and Landing
777	28	Negligible	200 lb / 91 kg	No decrement

57-41-05 Outboard Slat Spanwise Bulb Seal

A162928

Two (one per side) may be missing.

Reduce performance limited weight for each foot of missing seal by:

Applicable Models	Number Installed	Takeoff	Enroute Climb	Approach and Landing
777-200/300 PW/GE	12	350 lb / 159 kg	600 lb / 273 kg	No decrement
777-200/300 RR	12	350 lb / 159 kg	500 lb / 227 kg	No decrement
777-300ER/200LR/F	12	300 lb / 137 kg	550 lb / 250 kg	No decrement

57-41-06 Slat Spanwise Lower Flexible Seal

A162928

Eight (up to four on each side) may be missing.

Reduce performance limited weight for each missing seal by:

Applicable Models	Number Installed	Takeoff	Enroute Climb	Approach and Landing
777-200/300	40	Negligible	Negligible	No decrement
777-300ER/200LR/F	42	Negligible	Negligible	No decrement

57-41-08 Inboard Slat Inboard End Bulb Seal

A121244

Any number may be missing.

Reduce performance limited weight for each missing seal by:

Applicable Models	Number Installed	Takeoff	Enroute Climb	Approach and Landing
777	4	150 lb / 69 kg	250 lb / 113 kg	150 lb / 69 kg

57-41-09 Krueger End Seal

A162928

Any number may be missing.

Reduce performance limited weight for each missing seal by:

Applicable Models	Number Installed	Takeoff	Enroute Climb	Approach and Landing
777-200 RR875 thru 884	6	1050 lb / 477 kg	Negligible	900 lb / 409 kg
777-200 PW/RR895	6	1350 lb / 613 kg	Negligible	1650 lb / 749 kg
777-200 RR892	6	1650 lb / 749 kg	Negligible	1050 lb / 477 kg
777-200 GE	6	1500 lb / 681 kg	Negligible	1500 lb / 681 kg
777-300 PW4090/RR	6	1200 lb / 545 kg	Negligible	900 lb / 409 kg
777-300 PW4098	6	1800 lb / 817 kg	Negligible	900 lb / 409 kg
777-300ER	6	1300 lb / 590 kg	Negligible	900 lb / 409 kg
777-200LR/F	6	1350 lb / 613 kg	Negligible	1200 lb / 545 kg

57-41-23 Inboard Slat Inboard End Blade Seal

A211964

One or both may be missing.

Note:

1. Seal may be missing only below the crossing Inboard End Bulb Seal (CDL item 57-41-08).
2. Seal may not be missing in combination with items CDL 57-41-06 or CDL 57-41-08.

Reduce performance limited weight for each missing seal by:

Applicable Models	Number Installed	Takeoff	Enroute Climb	Approach and Landing
777	2	Negligible	Negligible	No decrement

57-51-01 Wing Fixed Trailing Edge Lower Panel

A164397

Four (up to two on each side) may be missing.

Note:

1. For missing panels forward of the inboard flaps, limit speed to 270 KIAS / 0.73 Mach.
2. If "ALTERNATE GEAR DOWN DISPATCH" switch is installed, then switch must be placed in the V_{MO} position.
3. Combinations with missing parts from sub-system 32-12 and this part are not authorized.

Reduce performance limited weight for each missing panel by:

Applicable Models	Number Installed	Takeoff	Enroute Climb	Approach and Landing
777-200 GE90-76B thru 85B	30	5750 lb / 2609 kg	9550 lb / 4332 kg	150 lb / 69 kg
777-200 GE90-90B	30	6350 lb / 2881 kg	10800 lb / 4899 kg	250 lb / 114 kg
777-200 GE90-94B	30	6350 lb / 2881 kg	12700 lb / 5761 kg	150 lb / 69 kg
777-200 RR875 thru RR884	30	4450 lb / 2019 kg	9550 lb / 4332 kg	150 lb / 69 kg
777-200 RR892	30	7000 lb / 3176 kg	10800 lb / 4899 kg	200 lb / 114 kg
777-200 RR895	30	5100 lb / 2314 kg	10800 lb / 4899 kg	300 lb / 137 kg
777-200 PW4074 thru PW4084	30	5100 lb / 2314 kg	12700 lb / 5761 kg	150 lb / 69 kg
777-200 PW4090	30	5750 lb / 2609 kg	11450 lb / 5194 kg	150 lb / 69 kg
777-300 RR884 or RR892	30	5100 lb / 2314 kg	10150 lb / 4604 kg	150 lb / 69 kg
777-300 PW4090	30	5100 lb / 2314 kg	11450 lb / 5194 kg	150 lb / 69 kg
777-300 PW4098	30	7650 lb / 3470 kg	11450 lb / 5194 kg	150 lb / 69 kg
777-300ER	30	5400 lb / 2450 kg	11450 lb / 5194 kg	150 lb / 69 kg
777-200LR/F	30	5750 lb / 2609 kg	10800 lb / 4899 kg	200 lb / 114 kg

57-51-02 Inboard Flap Inboard Seal

A180399

Any number may be missing.

Reduce performance limited weight for each foot of missing seal by:

Applicable Models	Number Installed	Takeoff	Enroute Climb	Approach and Landing
777-200/300	6	300 lb / 137 kg	450 lb / 205 kg	700 lb / 318 kg
777-300ER/200LR/F	6	200 lb / 91 kg	400 lb / 182 kg	500 lb / 227 kg

57-51-03 Overwing Fairing Torque Tube Door

A121244

Both may be missing.

Reduce performance limited weight for each missing door by:

Applicable Models	Number Installed	Takeoff	Enroute Climb	Approach and Landing
777-200 PW/GE/RR	2	No decrement	No decrement	7050 lb / 3198 kg
777-200 RR892	2	No decrement	No decrement	8200 lb / 3719 kg
777-200 GE90B	2	No decrement	No decrement	11750 lb / 5329 kg
777-200 RR895	2	No decrement	No decrement	12900 lb / 5851 kg
777-300 PW/RR	2	No decrement	No decrement	7050 lb / 3198 kg
777-300ER	2	No decrement	No decrement	7050 lb / 3198 kg
777-200LR/F	2	No decrement	No decrement	9400 lb / 4264 kg

57-51-04 Number 3 and 6 Flap Fairings Seals

A121244

Fourteen (up to seven per wing), this includes the hinge assembly to which the aft most seal is attached, may be missing.

Note: For one or more missing seals on both wings, the performance limited weight reductions are doubled.

Reduce performance limited weight for up to seven missing seals by:

Applicable Models	Number Installed	Takeoff	Enroute Climb	Approach and Landing
777	20	150 lb / 68 kg	250 lb / 113 kg	No decrement

57-53-01 Flaperon Inboard Seal

A121244

Any number may be missing.

Reduce performance limited weight for each foot of missing seal by:

Applicable Models	Number Installed	Takeoff	Enroute Climb	Approach and Landing
777	12	200 lb / 91 kg	350 lb / 159 kg	200 lb / 91 kg

57-53-02 Inboard Flap Leading Edge Seal

A121244

Four (up to two on each side) may be missing.

Reduce performance limited weight for each foot of missing seal by:

Applicable Models	Number Installed	Takeoff	Enroute Climb	Approach and Landing
777	20	150 lb / 68 kg	250 lb / 113 kg	No decrement

57-53-03 Outboard Flap Leading Edge Seal**A121244**

Two (one per side) may be missing.

Reduce performance limited weight for each foot of missing seal by:

Applicable Models	Number Installed	Takeoff	Enroute Climb	Approach and Landing
777	8	150 lb / 68 kg	250 lb / 113 kg	No decrement

57-63-02 Flaperon Cove Lip Door Streamwise Seal**A121244**

Any number may be missing.

Reduce performance limited weight for each missing seal by:

Applicable Models	Number Installed	Takeoff	Enroute Climb	Approach and Landing
777	4	Negligible	150 lb / 68 kg	No decrement

57-63-03 Flaperon Cove Lip Door Hingewise Seal

A162928

One may be missing.

Reduce the performance limited weight by:

Applicable Models	Number Installed	Takeoff	Enroute Climb	Approach and Landing
777-200 GE90-76B thru 85B	2	1000 lb / 454 kg	1700 lb / 771 kg	No decrement
777-200 GE90-90B	2	1100 lb / 499 kg	1900 lb / 862 kg	No decrement
777-200 GE90-94B	2	1100 lb / 499 kg	2200 lb / 998 kg	No decrement
777-200 RR875 thru RR884	2	800 lb / 363 kg	1700 lb / 771 kg	No decrement
777-200 RR892	2	1250 lb / 567 kg	1900 lb / 862 kg	No decrement
777-200 RR895	2	900 lb / 409 kg	1900 lb / 862 kg	No decrement
777-200 PW4074 thru PW4084	2	900 lb / 409 kg	2200 lb / 998 kg	No decrement
777-200 PW4090	2	1000 lb / 454 kg	2000 lb / 908 kg	No decrement
777-300 RR892	2	900 lb / 409 kg	1800 lb / 817 kg	No decrement
777-300 PW4090	2	900 lb / 409 kg	2000 lb / 908 kg	No decrement
777-300 PW4098	2	1350 lb / 612 kg	2000 lb / 908 kg	No decrement
777-200LR/F/300ER	2	1000 lb / 453 kg	2000 lb / 908 kg	No decrement

57-63-04 Flaperon Outboard Seal

A121244

Any number may be missing.

Reduce performance limited weight for each foot of missing seal by:

Applicable Models	Number Installed	Takeoff	Enroute Climb	Approach and Landing
777	4	200 lb / 91 kg	350 lb / 159 kg	200 lb / 91 kg

57-63-05 Aileron Streamwise Seal

A121244

Any number may be missing.

Reduce performance limited weight for each foot of missing seal by:

Applicable Models	Number Installed	Takeoff	Enroute Climb	Approach and Landing
777	8	200 lb / 91 kg	300 lb / 136 kg	200 lb / 91 kg

57-63-06 Aileron Power Control Unit Fairing

A121244

Both fairings may be missing.

Reduce performance limited weight by:

Applicable Models	Number Installed	Takeoff	Enroute Climb	Approach and Landing
777	2	Negligible	Negligible	Negligible

57-63-07 Aileron Mass Balance Seal

A162928

Any number may be missing.

Reduce performance limited weight for each foot of missing seal.

Applicable Models	Number Installed	Takeoff	Enroute Climb	Approach and Landing
777	12	50 lb / 23 kg	100 lb / 46 kg	50 lb / 23 kg

57-63-08 Aileron Hinge Blade Seal

A180391

All may be missing. Penalty shown is per missing item.

Applicable Models	Number Installed	Takeoff	Enroute Climb	Approach and Landing
777-200/-300	6	200 lb / 91 kg	150 lb / 69 kg	150 lb / 69 kg
777-200LR/-300ER/F	8	150 lb / 69 kg	150 lb / 69 kg	150 lb / 69 kg

57-63-09 Aileron Hinge Blade Seal and Seal Retainer

A180391

All may be missing. Penalty shown is per missing item.

Applicable Models	Number Installed	Takeoff	Enroute Climb	Approach and Landing
777-200/-300	6	500 lb / 227 kg	400 lb / 182 kg	450 lb / 205 kg
777-200LR/-300ER/F	8	350 lb / 159 kg	350 lb / 159 kg	350 lb / 159 kg

57-71-01 Spoiler Streamwise Seal

A121244

Four (up to two on each side) may be missing.

Reduce performance limited weight for each missing seal by:

Applicable Models	Number Installed	Takeoff	Enroute Climb	Approach and Landing
777	28	600 lb / 272 kg	1000 lb / 454 kg	600 lb / 272 kg

57-71-02 Spoiler Leading Edge Seal

A121244

Two (one per side) may be missing.

Reduce performance limited weight for each foot of missing seal by:

Applicable Models	Number Installed	Takeoff	Enroute Climb	Approach and Landing
777	36	150 lb / 68 kg	250 lb / 113 kg	150 lb / 68 kg

71-11-01 Oil Tank Sight Glass Door and Pressure Relief Door

A121244

Both may be missing.

Reduce performance limited weight by:

Applicable Models	Number Installed	Takeoff	Enroute Climb	Approach and Landing
777 PW	2	Negligible	Negligible	Negligible

71-11-02 Engine Cowl Inlet Streamwise Aerofiller

A121244

Both may be missing.

Reduce performance limited weight by:

Applicable Models	Number Installed	Takeoff	Enroute Climb	Approach and Landing
777	2	Negligible	Negligible	Negligible

71-11-03 Fan Cowl Pressure Relief Door

A121244

Both may be missing.

Note : For 777-300ER/200LR/F, not applicable to GE90-100 Series engines.

Reduce performance limited weight by:

Applicable Models	Number Installed	Takeoff	Enroute Climb	Approach and Landing
777 GE	2	Negligible	Negligible	Negligible

71-11-04 Oil Tank Access Door

A121244

Both may be missing.

Reduce performance limited weight for each missing door by:

Applicable Models	Number Installed	Takeoff	Enroute Climb	Approach and Landing
777 GE	2	Negligible	200 lb / 91 kg	Negligible

71-11-05 Fan Cowl Hoist Point Plugs

A121244

Any number may be missing.

Reduce performance limited weight for each missing plug by:

Applicable Models	Number Installed	Takeoff	Enroute Climb	Approach and Landing
777 PW/GE	12	Negligible	Negligible	Negligible

72-00-01 Debris Shield

A121244

One may be missing from the right engine.

Reduce performance limited weight by:

Applicable Models	Number Installed	Takeoff	Enroute Climb	Approach and Landing
777 PW	2	No decrement	No decrement	No decrement

78-31-01 Thrust Reverser Sleeve Actuator Access Panel

A121244

For PW or GE eight (up to two on each nacelle half) may be missing. The top panel on each nacelle half may not be missing.

For RR four (up to one on each nacelle half) may be missing. Only the middle panel on each nacelle half may be missing.

Reduce performance limited weight by:

Applicable Models	Number Installed	Takeoff	Enroute Climb	Approach and Landing
777 PW/GE	12	Negligible	Negligible	Negligible
777 RR	12	Negligible	Negligible	Negligible

78-31-02 Thrust Reverser Blocker Door

A162928

One door may be missing from each nacelle half.

Reduce performance limited weight for each missing door by:

Applicable Models	Number Installed	Takeoff	Enroute Climb	Approach and Landing
777-200/300 GE	32	950 lb / 430 kg	750 lb / 340 kg	750 lb / 340 kg
777-200/300 PW	24	1150 lb / 521 kg	1250 lb / 566 kg	1150 lb / 521 kg
777-200/300 RR	24	1050 lb / 476 kg	600 lb / 272 kg	800 lb / 362 kg
777-300ER	32	1650 lb / 749 kg	1400 lb / 636 kg	1550 lb / 704 kg
777-200LR/F	32	2050 lb / 930 kg	1350 lb / 613 kg	2000 lb / 908 kg

On Wet/Contaminated Runways for one or two missing doors, reduce performance limited weights by:

Applicable Models	Number Installed	Takeoff Wet		Takeoff Contaminated		Landing Contaminated	
		One Door	Two Doors	One Door	Two Doors	One Door	Two Doors
777-300ER	32	12,550 lb 5693 kg	36,000 lb 16,330 kg	26,250 lb 11,907 kg	77,100 lb 34,972 kg	21,000 lb 9526 kg	63,000 lb 28,577 kg
777-200LR/F	32	12,250 lb 5557 kg	34,700 lb 15,740 kg	25,050 lb 11,363 kg	73,100 lb 33,158 kg	26,500 lb 12,021 kg	79,500 lb 36,061 kg

78-31-03 Thrust Reverser Cascade Segment

A121244

Up to 6 segments on one engine may be missing.

There is no performance decrement, provided:

1. Segments are missing from one engine only and associated trust reverser is deactivated for dispatch.
2. No two adjacent segments are missing.
3. Top and bottom segments remain in place.

Reduce performance limited weight by:

Applicable Models	Number Installed	Takeoff	Enroute Climb	Approach and Landing
777	32	No decrement	No decrement	No decrement

78-31-04 Thrust Reverser Wedge Fairing

A162928

Two fairings may be missing from each nacelle half.

Note:

1. On later PW series thrust reversers (P/N 315W3298), the Thrust Reverser Wedge Fairings may not be missing because they are integrated with the thrust reverser outer wall structure and are non-removable.
2. For 777-300ER/200LR/F, not applicable to GE90-100 Series engines.

Reduce performance limited weight for each missing fairing by:

Applicable Models	Number Installed	Takeoff	Enroute Climb	Approach and Landing
777 PW/RR	28	250 lb / 114 kg	250 lb / 114 kg	250 lb / 114 kg
777 GE	36	200 lb / 91 kg	150 lb / 69 kg	150 lb / 69 kg

78-31-05 Thrust Reverser Blocker Door Seals

A121244

Seven may be missing.

Reduce performance limited weight by:

Applicable Models	Number Installed	Takeoff	Enroute Climb	Approach and Landing
777 PW/RR	24	Negligible	Negligible	Negligible
777 GE	32	Negligible	Negligible	Negligible

78-31-06 Thrust Reverser Hinge Beam Forward Fairing Access Door

A180399

For GE90-90 Series Engines

Any number of access doors may be missing.

Note:

1. Access doors from the Mid and Aft Fairings may not be missing.

Reduce performance limited weights for each missing door by:

Applicable Models	Number Installed	Takeoff	Enroute Climb	Approach and Landing
777-200	4 (2 per strut)	Negligible	200 lb / 91 kg	Negligible

For GE90-100 Series Engines

Any number of aft access doors from the forward fairing may be missing.

Note.

1. Forward access doors from the forward fairing and access doors from the Mid and Aft Fairings may not be missing.

Reduce performance limited weights for each missing door by:

Applicable Models	Number Installed	Takeoff	Enroute Climb	Approach and Landing
777-300ER/ -200LR/F	8 (4 per strut)	Negligible	200 lb / 91 kg	Negligible



Page Intentionally Left Blank